



Brochure



Colour Manager

- High speed, high performance, excellent quality
- Future proofed technology to improve your productivity
- Extraordinary colours and crystal clear images at the touch of a button
- Built-in security features to protect your data and documents

e-STUDIO5540c
e-STUDIO6540c
e-STUDIO6550c



SAP® Printer Vendor Solution



Networking Documents.

TOSHIBA
Leading Innovation >>>



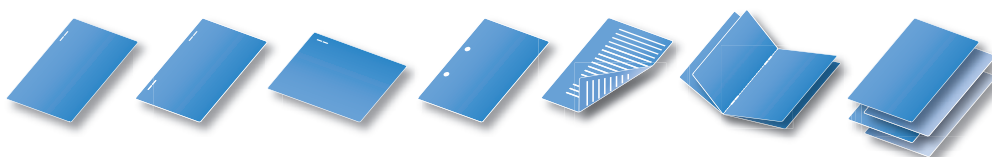
Exceed the limitations of your document workflow

- The e-STUDIO6550c series colour systems are reliable productivity platforms and comprehensive control centres for a modern and efficient digital document workflow.
- The embedded Toshiba e-BRIDGE technology enhances workgroups, departments and companies with new applications that go beyond the scope of classic print, scan, copy and fax.
- Discover future-oriented document management and learn how the new e-STUDIO colour systems secure and extend your business knowledge.

The future of productivity is flexibility

Enhance the efficiency and productivity of your e-STUDIO colour systems by adding modular e-BRIDGE software solutions that optimise your processes:

- **e-BRIDGE Re-Rite** – integrated text recognition that converts your conventional paper work into fully searchable and editable Microsoft Office documents.
- **e-BRIDGE Document Library** – the central information database from Toshiba for all your documents. A future-proof insurance policy for the document-based knowledge within your organisation.
- **TopAccess** – Toshiba's browser-based management software is the powerful, standardised administration tool for all e-BRIDGE systems.
- **e-BRIDGE Fleet Management System** – centralised administration and controlling of all Toshiba devices in your company, from page counter reports to real-time status messages.





Ready to meet any challenge

Expand your company's document workflow with intuitive functionality. The e-STUDIO6550c series colour systems have been designed to meet and master any challenge regarding your printed and digitalised information.

Toshiba's e-BRIDGE technology is built into all colour systems. The unique controller and software platform is the key to exceptional integration and powerful performance, which is ready to keep pace with your increasing demands.

The e-STUDIO6550c series enables fully automatised processing, archiving and storage as well as search and retrieval of any document – using a centralised system, based upon a unique software platform.

Even the largest print jobs and document queues are no challenge for the powerful e-BRIDGE controller. Its open architecture goes far beyond the basic print, scan, copy and fax functionality and provides document management, driven by intelligent software and pre-defined processes.

With the new e-STUDIO6550c colour systems Toshiba builds a technological bridge into the future of multifunctionality.

- Three e-STUDIO colour systems for every workflow, department and company size.
- Expandable e-BRIDGE software platform for individual functionality and flexible integration.
- User-friendly operation and intuitive handling – both at the device and from your desk.

Driven by



e-BRIDGE controller technology from Toshiba is the high-tech core of every e-STUDIO colour system. It's the functional foundation for fast and fascinating document processing and highly productive applications. Benefit from the future of productivity, already built into every e-STUDIO6550c series model today.

More workflow security inside

The e-STUDIO system can be connected to your company network via different interface and communication standards. Being connected to the world is crucial to efficient document handling, but at the same time makes high demands on security issues.

The e-STUDIO6550c colour systems comply with the strictest of security standards. An integrated firewall in connection with the sophisticated user authentication prevents unauthorised access to your e-STUDIO systems, under any circumstances.

Your valuable data and confidential information is safe. The print data and document handling has been designed to respect security and integrity: from role based access to hard drive encryption.

Every colour system of the e-STUDIO6550c series offers you SSL-Encryption, Secure PDF, individual rights assignment and user-specific access via personal ID card, thus ensuring secure workflows.

Convenient Options

- **e-BRIDGE ID Gate** – secure user authentication with contactless ID cards.
- **Data Overwrite Kit** – prevents unauthorised recovery of and access to your highly sensitive data.



Future-proof sustainability



Caring for the environment and its resources is part of Toshiba's tradition – starting with the choice of materials all the way to recycling issues. The e-STUDIO6550c series colour systems comply with leading international environmental standards. Their operation is extremely energy-efficient, e. g. no more than 5 watts are consumed in sleep mode. Furthermore, the colour systems operate quietly without compromising on excellent performance.

Materials have been tested for environmental friendliness and can be recycled hassle-free. Many components of the devices are already made of recycled plastic or are biomass-derived.



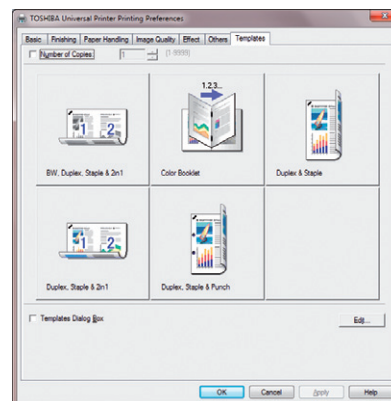
Easy integration, intuitive handling, efficient management

Our e-STUDIO6550c series colour systems are so easy to manage and so intuitive to handle that they unfold their full productivity potential in no time. They smoothly and safely integrate into existing network environments. Thanks to their open architecture, applications from mobile printing to web applications can be embedded.

The unique Toshiba e-BRIDGE controller and software platform is the key to outstanding system performance – which can be developed to match future demands. Company-wide network print, scan, copy and fax functionality is available at all times regardless of the number of installed systems – whilst administration, device status control and costs remain simple and transparent.

In addition, the new, universal printer driver simplifies the handling for every user. Several e-STUDIO systems can easily be accessed and controlled via a single driver.

Last, but not least, system handling is now even more enjoyable than ever. The large, crisp-clear LCD touch panel with its ergonomic user interface allows full and instant access to the impressive added values – from the user-specific one-touch templates in My Menu to the enhanced preview options.



Printer driver with One-touch-templates



The e-STUDIO6550c series is open for integration. So feel free to add software solutions that suit your needs, whenever you want to: from intuitive connectivity to your company's software and document management to further improved security, cost-cutting efficiency and clever customisation.

Configuration



System Options

- Fax Board GD-1270EU
- e-BRIDGE ID-Gate
- Wireless LAN Module GN-1060
- Bluetooth Module GN-2010
- Data Overwrite Enabler GP-1070
- IPsec Enabler GP-1080
- Meta Scan Enabler GS-1010
- Web-Services Enabler GS-1020
- e-BRIDGE Re-Rite GB-1280



Accelerate your productivity

Productivity that is meant to be really efficient needs top performance always at hand. This is what the new e-STUDIO6550c series offers – but not only with regard to print, scan and copy speed.

Clever tandem printing speeds leverage the output of high volume print jobs, as they can be allocated to different devices if necessary.

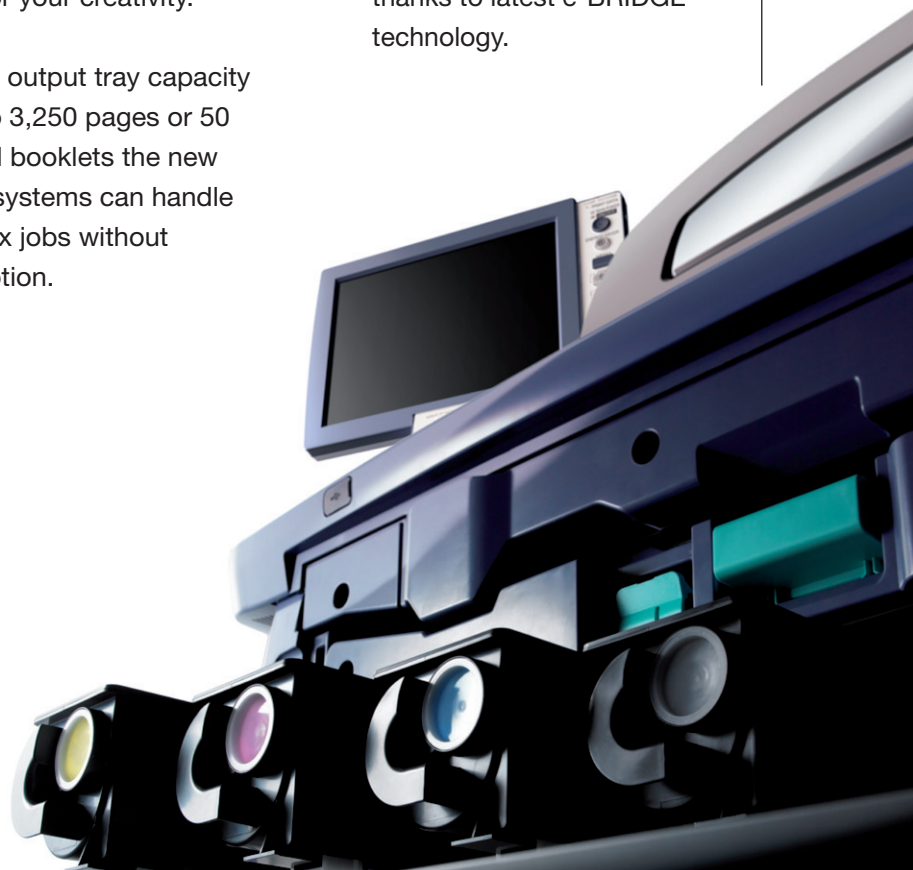
The new systems can handle a wide range of paper weights from 64 up to 300 gsm as well as A3+ and impressive banner formats up to 1200 mm length.

Every one of the three models of the e-STUDIO6550c series comes with a large choice of paper cassettes, trays and finishing options.

Whether hole punching, stitching or booklet printing with saddle-stitch and fold – the optional finishing possibilities leave plenty of room for your creativity.

With an output tray capacity of up to 3,250 pages or 50 finished booklets the new colour systems can handle complex jobs without interruption.

- Print and copy with up to 65 colour pages per minute.
- Impressive scan speed of up to 77 pages per minute.
- Various, highly productive finishing options.
- Rapid output regardless of print job complexity thanks to latest e-BRIDGE technology.



Due to the latest Toshiba e-TAIP image processing technology the output quality satisfies with brilliant colours and high stability. The extremely fine toner brings natural colours to life and high-resolution details to paper.



e-STUDIO5540c

e-STUDIO6540c

e-STUDIO6550c



General	<p>Print & Copy Speed Colour: 55/65/65 ppm (A4), 27/30/30 ppm (A3) B&W: 55/65/75 ppm (A4), 27/30/37 ppm (A3)</p> <p>Warm-up Time Approx. 70 seconds from low-power mode</p> <p>Paper Size & Weight Cassettes: A5R-320 x 460 mm, 64-256 gsm Tandem LCF²⁾: A4, 64-256 gsm Bypass: A6R-330 x 483 mm, 64-300 gsm, banner paper (313 x 1,200 mm, 90-163 gsm)³⁾</p> <p>Paper Capacity 4 x 540 sheets (Cassettes) or 2 x 540 sheets (Cassettes) + 2,320 sheets (Tandem LCF²⁾, 100 sheets (Bypass) Maximum: 6,000²⁾ sheets with external LCF¹⁾ A5R-320 x 460 mm, 64-256 gsm</p> <p>Automatic Duplex Controller Type Toshiba e-BRIDGE</p> <p>Memory Interface 80 GB HDD, 2.0 GB RAM 10/100/1000 BaseT (incl. IPv6), High-Speed USB 2.0, WLAN¹⁾ (IEEE802.11b/g), Bluetooth¹⁾</p> <p>Dimensions & Weight 980 x 698 x 1,540 mm (W x D x H), ~ 244 kg</p>
Print	<p>Resolution Max. 600 x 600 dpi, 8 bit per colour channel Max. 1,200 x 1,200 dpi, 2 bit per colour channel⁴⁾</p> <p>Page Description Languages Supported Systems XPS, PCL6 and PostScript 3 compatible Windows 7/Vista/XP/Server 2008/Server 2003 (32/64 bit), Windows Server 2008 R2 (64 bit), Mac OS X, Linux/UNIX, Novel Netware (NDPS), Citrix, SAP, AS/400</p> <p>Colour Modes Colour Settings Auto-Colour (ACS), Colour, Twin Colour, B&W Brightness, Saturation, Contrast, Colour Balance, ICC profiles management</p> <p>Print Functions Universal Driver, Driver templates, Driver plug-ins, Hold print, Print from USB, Tandem printing</p>
Scan	<p>Resolution Scan Speed Document Feeder Scan Modes File Formats Max. 600 x 600 dpi, 8 bit per colour channel Colour & B&W: Up to 77 ppm (300 dpi) Max. 100 sheets, A5R-A3, 35-209 gsm Auto-Colour (ACS), Colour, Greyscale, B&W JPEG, Multi/Single Page TIFF/XPS/PDF, Secure PDF, Slim PDF, Searchable PDF¹⁾ (and other editable formats like DOC, XLS, RTF, TXT, PDF/A)¹⁾</p> <p>Scan Functions WS Scan (pull/push), Scan to USB, Scan to E-Mail, Scan to File (SMB, FTP, FTPS, IPX/SPX, local), Meta Scan¹⁾, Scan to Box (e-Filing), TWIN 1.7/1.8/1.9</p>
Copy	<p>Resolution Scan: 600 x 600 dpi, 10 bit per colour channel Print: 600 x 600 dpi, 8 bit per colour channel 2,400 x 600 dpi, B&W with smoothing</p> <p>First Copy Output Time Colour: Approx. 6.5 seconds B&W: Approx. 5.3/5.3/4.6 seconds</p> <p>Zoom Copy Modes Colour Modes 25-400% (platen), 25-200% (RADF) Text, Text/Photo, Photo, Printed Image, Map Auto-Colour (ACS), Full Colour, Twin Colour, Mono Colour, B&W</p> <p>Colour Settings Hue, Saturation, Colour Balance, 5 One-touch Modes, RGB Adjustment</p>
Fax¹⁾	<p>Communication Transmission Speed Compression Network-Fax Incoming Fax Routing Super G3, G3 - (opt. 2nd line), Internet Fax T.37 Approx. 3 seconds per page JBIG, MMR, MR, MH Driver for Windows 7/Vista/XP (32/64 bit) To shared folders (SMB, FTP, IPX/SPX), E-mail, e-Filing</p>
System & Security	<p>Device Management System Features e-BRIDGE Fleet Management System¹⁾, TopAccess for remote administration and configuration e-Filing document server for secure storage, document distribution and Print-on-Demand (1 public box, 200 user boxes), 12,060 One-touch Templates for storage of personalised settings or workflows, Scan/Fax preview, RIP-while-Print, e-BRIDGE Open Platform¹⁾, Job Skip</p> <p>Accounting & Security Role Based Access, LDAP support, 1,000 department codes & 10,000 user codes, card reader¹⁾, private print, standard data encryption, Data Overwrite Enabler¹⁾, IP and MAC address filter, port filter, support of SSL and IPsec¹⁾ protocols, IEEE802.1x support, IEEE2600.2-4, IEEE2600.1 optional compliance³⁾, Scan to secure PDF</p>

OPTIONS

MULTI-STAPLING FINISHER – MJ-1103
2 trays, 3,250-sheet capacity
50-sheet multi-position stapling
A5R-A3, 64-105 gsm (stapling mode)
617 x 603 x 1,085 mm (W x D x H), ~ 40 kg

SADDLE-STITCH FINISHER – MJ-1104
2 trays, 3,250-sheet capacity
50-sheet multi-position stapling
5-sheet center-folding
Saddle-stitched booklets of up to 60 pages
A5R-A3, 64-105 gsm (stapling mode)
617 x 603 x 1,085 mm (W x D x H), ~ 70 kg

HOLE PUNCH UNIT – MJ-6102
Option for Finisher MJ-1103/MJ-1104
Available in 2 holes (E), 4 holes (F), 4 holes (S)
112 x 573 x 323 mm (W x D x H), ~ 7 kg

LARGE CAPACITY FEEDER – MP-2501A
2,500-sheet capacity, A4, 64-256 gsm
360 x 552 x 542 mm (W x D x H), ~ 29 kg

OTHER OPTIONS

SIDE EXIT TRAY – KA-6550-ET
FAX BOARD – GD-1270EU
DATA OVERWRITE ENABLER – GP-1070
e-BRIDGE ID-GATE, TWN3XX
WIRELESS LAN MODULE – GN-1060
BLUETOOTH MODULE – GN-2010
META SCAN ENABLER – GS-1010
WEB-SERVICES ENABLER – GS-1020
IPsec ENABLER – GP-1080
e-BRIDGE Re-Rite – GB-1280

¹⁾ Optional
²⁾ e-STUDIO5540c tandem LCF version only
³⁾ With Toshiba waterproof banner paper up to 230 gsm
⁴⁾ PostScript driver only
⁵⁾ When data overwrite enabler GP-1070 installed

Productivity and paper specifications are related to a paper size of A4 and a paper weight of 80 gsm if not otherwise mentioned.



Technical data is subject to change without prior notice. All company and/or product names are trademarks and/or registered trademarks of their respective manufacturers in their markets and/or countries. All rights reserved. We are constantly making efforts to deliver the latest status of data to our partners. Specifications for some models may change in the time between the production and the release of this documentation. Productivity and paper specifications are related to a paper size of A4 and a paper weight of 80 gsm if not otherwise mentioned. Copyright © 2011 TOSHIBA TEC. BR_e-STUDIO6550c-series_2011_04

TOSHIBA TEC UK IMAGING SYSTEMS LTD

ABBAY CLOISTERS, ABBAY GREEN,
CHERTSEY, SURREY KT16 8RB
TEL 01932 580100 FAX 01932 580101
WWW.TOSHIBA.CO.UK/IMAGING

Jav.61329.0611



TOSHIBA
Leading Innovation >>>

6BY0COP1548